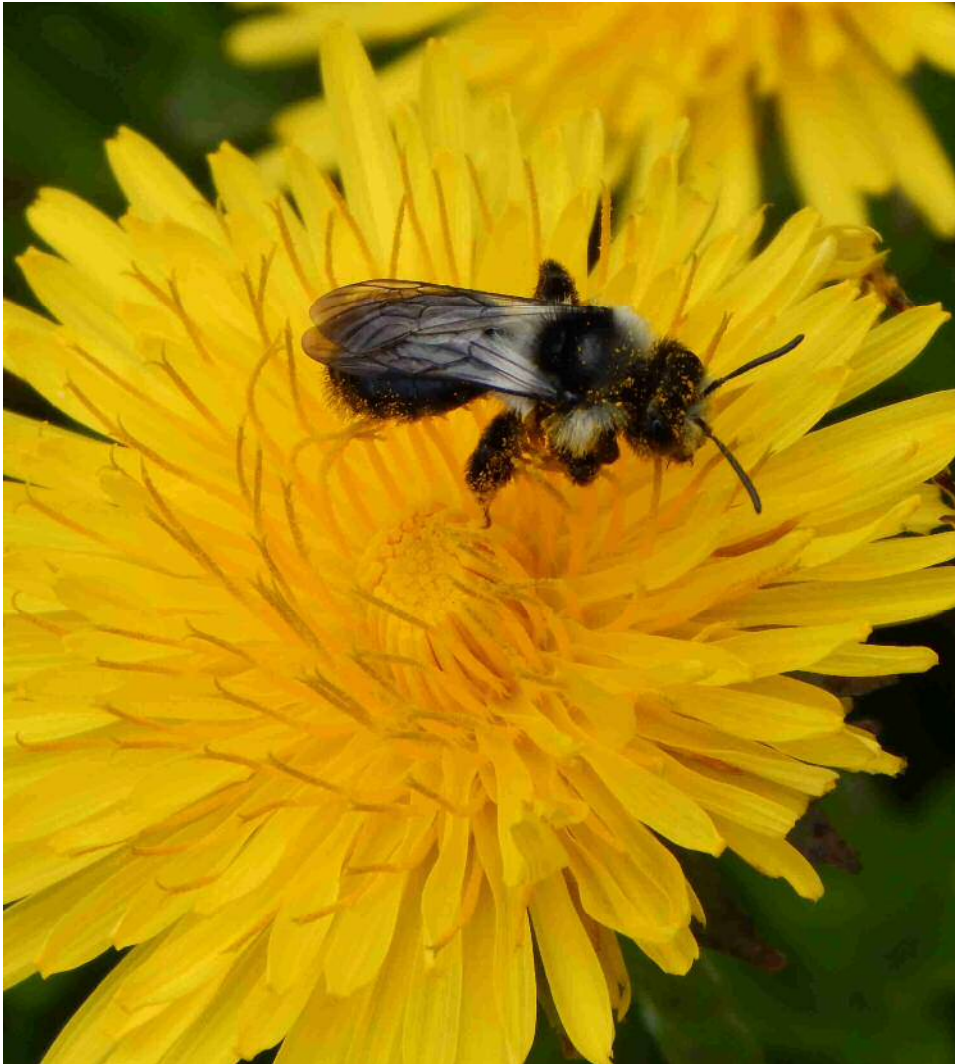


BUZZABOUTBEES.NET



Above is a picture of an Ashy mining bee.

Types Of Bees Word Search Puzzle

Copyright: www.buzzaboutbees.net

Types Of Bees Word Search Puzzle

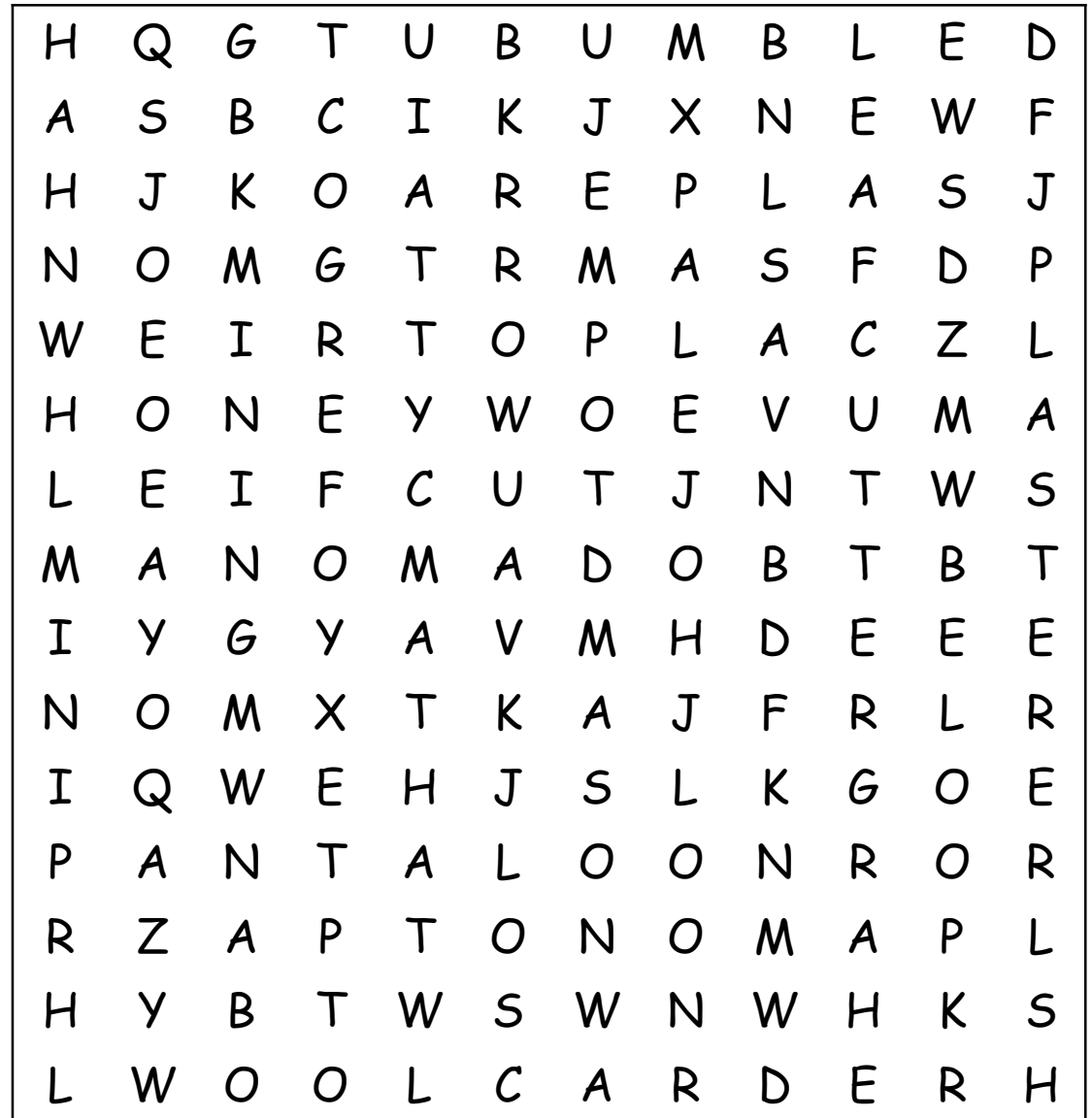
There are many types of bees, such as bumble bees, honey bees and mason bees. More are listed below.

Can you find the names of these different types of bees in the grid opposite? Words may travel horizontally, vertically, diagonally, forwards and backwards.

Words may also cross each other.

Answers on the next page.

BUMBLE
CARPENTER
HONEY
LEAFCUTTER
MASON
MINING
NOMAD
PANTALOON
PLASTERER
WOOL CARDER



SOLUTION

BUMBLE
CARPENTER
HONEY
LEAFCUTTER
MASON
MINING
NOMAD
PANTALOON
PLASTERER
WOOL CARDER

